



(#1 ORCHESTRA TUNE-UP.)

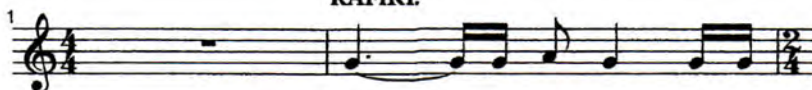
SCENE 1: PRIDE ROCK

(Before the dawn, an old mandrill, RAFIKI, enters and calls out. VOICES respond as the sun rises. #2 CIRCLE OF LIFE WITH NANTS' INGONYAMA.)

CIRCLE OF LIFE

WITH NANTS' INGONYAMA

RAFIKI:

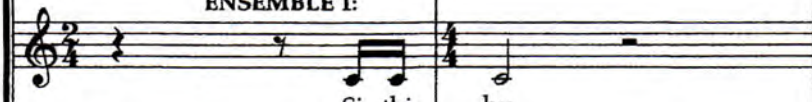


Nan ——— ts'in-go - nya - ma, ba -



ki - thi, ba-ba.

ENSEMBLE 1:



Si - thi hu.

ENSEMBLE 2:



Si - thi hu 'ngo-nya - ma.

(ENSEMBLE 1):



(ENSEMBLE 2):



18 (RAFIKI):
 day we ar - rive — on the
 (ALL):
 I - ngo - nya - ma neng - we 'na - ma - ba - la.

19
 pla - net and
 I - ngo - nya - ma neng - we 'na - ma - ba - la.

20
 blink - ing step in - to the sun,
 I - ngo - nya - ma neng - we 'na - ma - ba - la.

21
 — there is
 I - ngo - nya - ma neng - we 'na - ma - ba - la.

22
 more to see — than can
 I - ngo - nya - ma neng - we 'na - ma - ba - la.

23
 e - ver be seen, — more to
 I - ngo - nya - ma neng - we 'na - ma - ba - la.

24
 do than can e - ver — be
 I - ngo - nya - ma neng - we 'na - ma - ba - la.

25
 done. There is
 I - ngo - nya - ma neng - we 'na - ma - ba - la.

26 (RAFIKI):
 far to much to take in—
 (ALL):
 I - ngo-nya - ma neng - we 'na - ma - ba - la.

27
 — here. More to find
 I - ngo-nya - ma neng - we 'na - ma - ba - la.

28
 — than can e - ver be
 I - ngo-nya - ma neng - we 'na - ma - ba - la.

29
 found. But the
 I - ngo-nya - ma neng - we 'na - ma - ba - la.

30
 sun roll - ing high— through the
 I - ngo-nya - ma neng - we 'na - ma - ba - la.

31
 sap - phi - re sky— keeps great and
 I - ngo-nya - ma neng - we 'na - ma - ba - la.

32
 small on the end - less
 I - ngo-nya - ma neng - we 'na - ma - ba - la.

33
 round. It's the cir - cle of
 ENSEMBLE 1:
 ENSEMBLE 2:
 I - ngo-nya - ma neng - we 'na - ma - ba - la.